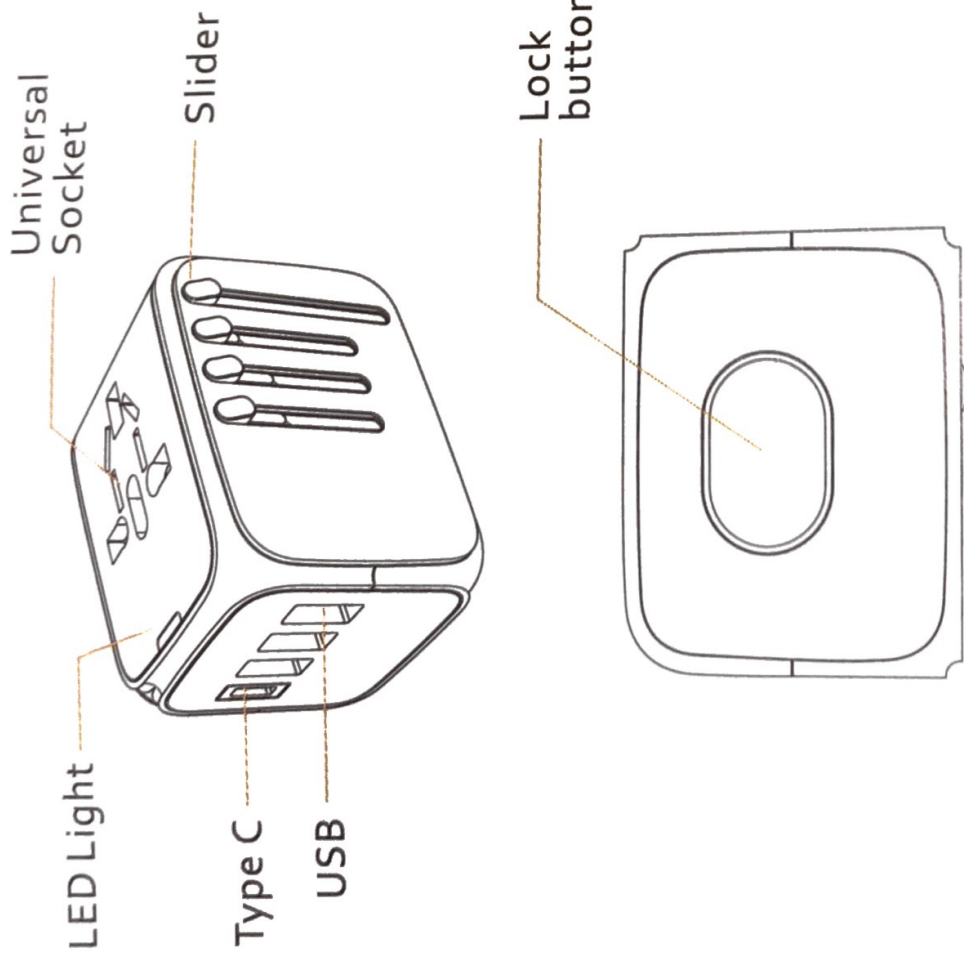


Features:

1. International Compatibility, UK/US/EU/AUS plug, universal socket and 4 ports.
2. Portable design, compact size comfortable for traveling
3. Patented product.
4. Fast charging, with Type-C port.
5. Nice Touching with Rubber oil coating
6. Built-In Safety Shutters.
7. Integrated fuse.

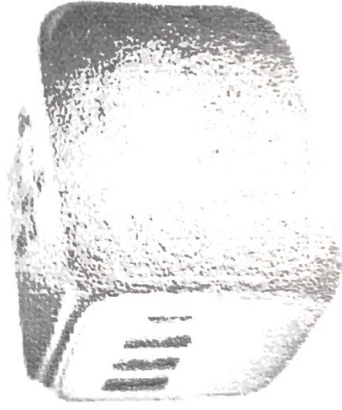
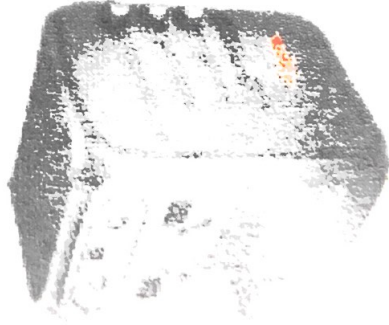


Item:	Universal Travel Adapter
Input:	100V-250V AC, 6A max
USB / Type-C Output:	5V 3.4A DC total
Each USB Output :	5V 2.4A DC max
Type-C:	5V 3A DC max
Power Rating:	660W max at 110V 1440w max at 240V
Size:	67*47*52 mm
Weight:	130g
Metal material:	cooper with nickle plating
Shell material:	PC

HOW TO USE

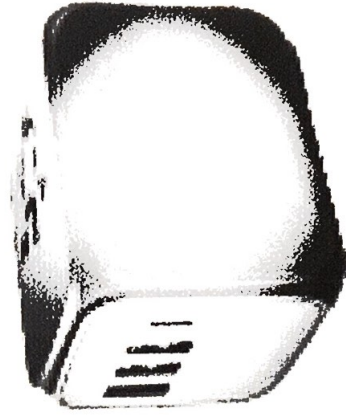
USA

Push the slider as the direction of arrow, at the same time press "Lock Button" to use the US plug. Retract the US plug, push the slider backwards and press "Lock Button" at the same time.



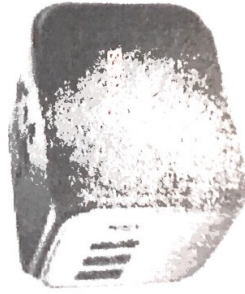
UK

Push the slider as the direction of arrow, at the same time press "Lock Button" to use the UK plug. Retract the UK plug, push the slider backwards and press "Lock Button" at the same time.



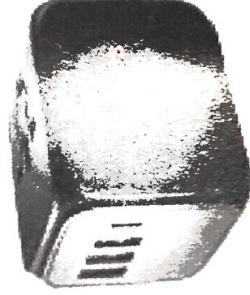
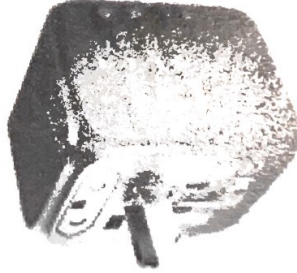
Europe

Push the slider as the direction of arrow, at the same time press "Lock Button" to use the EU plug. Retract the EU plug, push the slider backwards and press "Lock Button" at the same time.



Australia/ New Zealand

Push the slider as the direction of arrow, at the same time press "Lock Button" to use the AUS plug. Retract the AUS plug, push the slider backwards and press "Lock Button" at the same time.



Caution

Before use, Please read this instruction carefully! This product does not convert voltage (AC-AC), in order to avoid possible damage to your device or other safety hazards, please make sure the power outlet you intend to use has the proper voltage to run your device before using this adapter.

This adapter can not work with high power appliances such as hair dryers. Please check your appliance label to see if it requires less than 6A.

No grounding. This product is for use with unearthed or double insulated appliances only

Waste electrical products should not be disposed of with household waste. Please recycle where facilities exist. Check with your local authority for recycling advice.

